

Noomi Yoke Extension



Traditional Fair isle designs are given a modern boost of colour

A slightly more boyish version of the “Noomi” Cardigan; the “Naughton” yoke has the same base pattern, but the colours have been inverted (so that MC becomes CC and vice versa). This yoke uses larger-scale Fair isle motifs with a mix of pinks and navy, as well as mint and grass green, and flashes of mimosa yellow. This extension includes yoke charts only, so you will still need to use your original Noomi Cardigan pattern for the main instructions. Please also note that these yoke motifs do not meet in the middle, so, while fairly even, they are not perfectly continuous, this doesn’t matter as the steek will be cut for a cardigan anyway.

For the short rows, use white.



Chart 2a: the yoke (size 1 year)

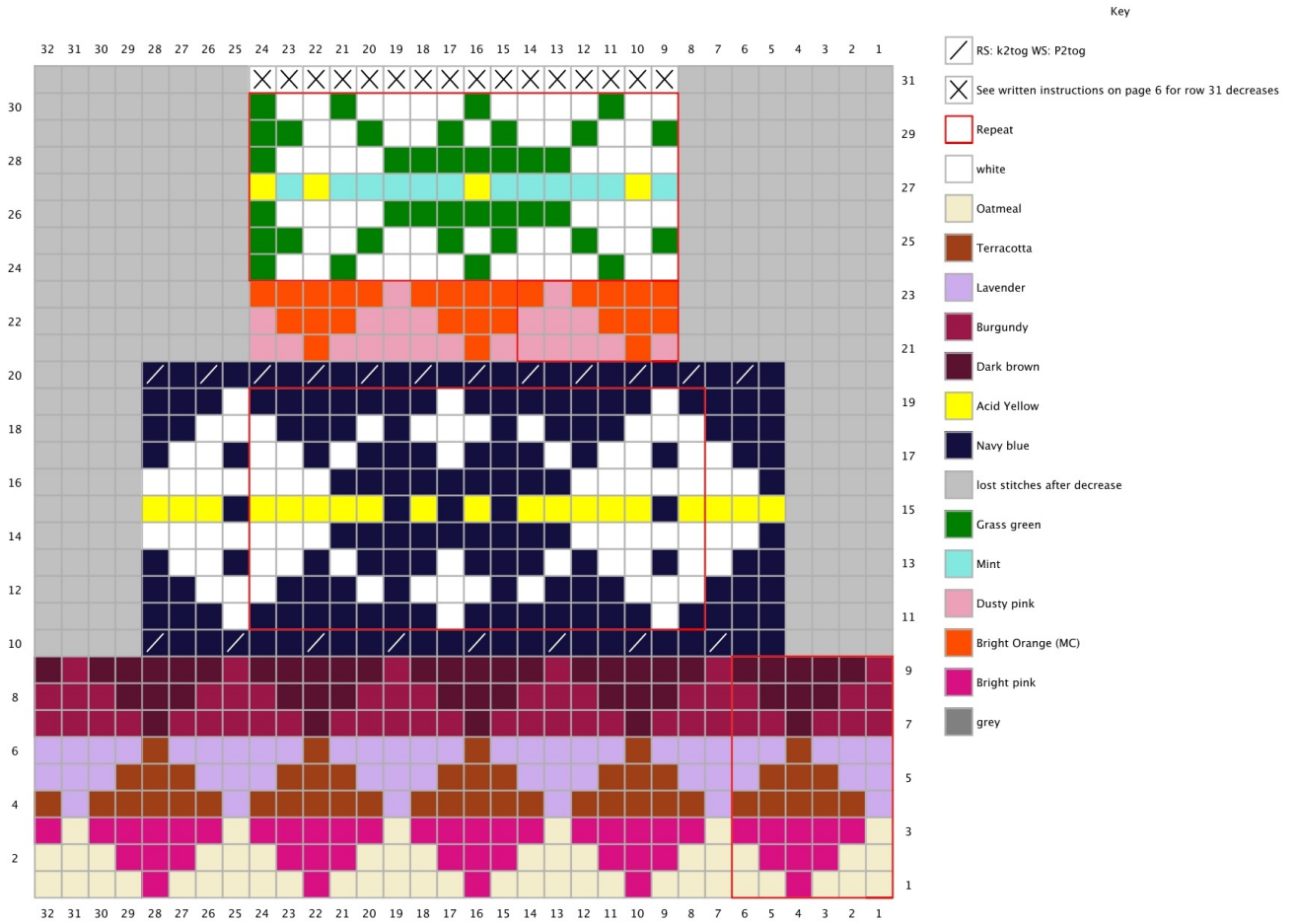


Chart 2b: the yoke (size 2 years)

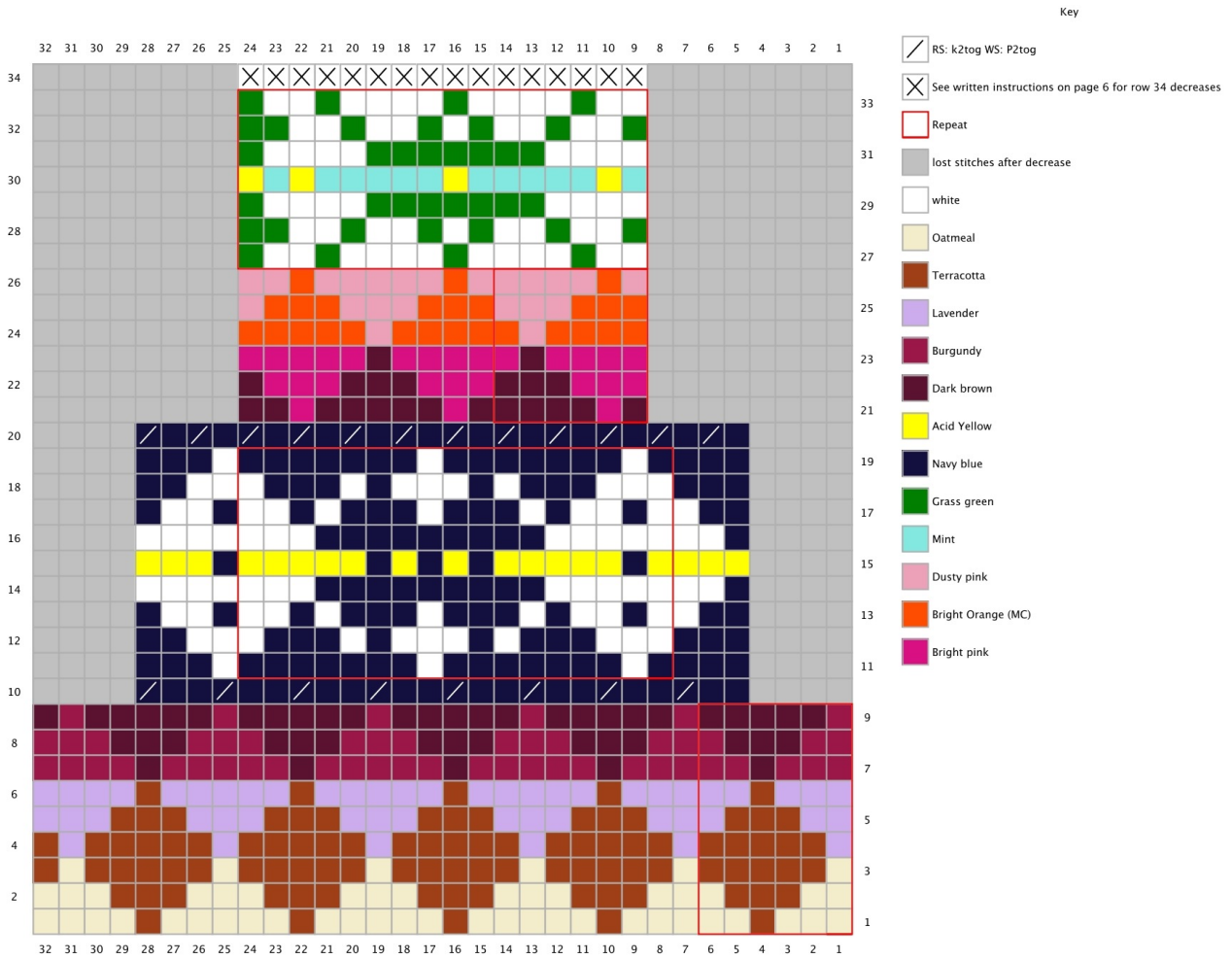


Chart 2c: the yoke (size 4 years)

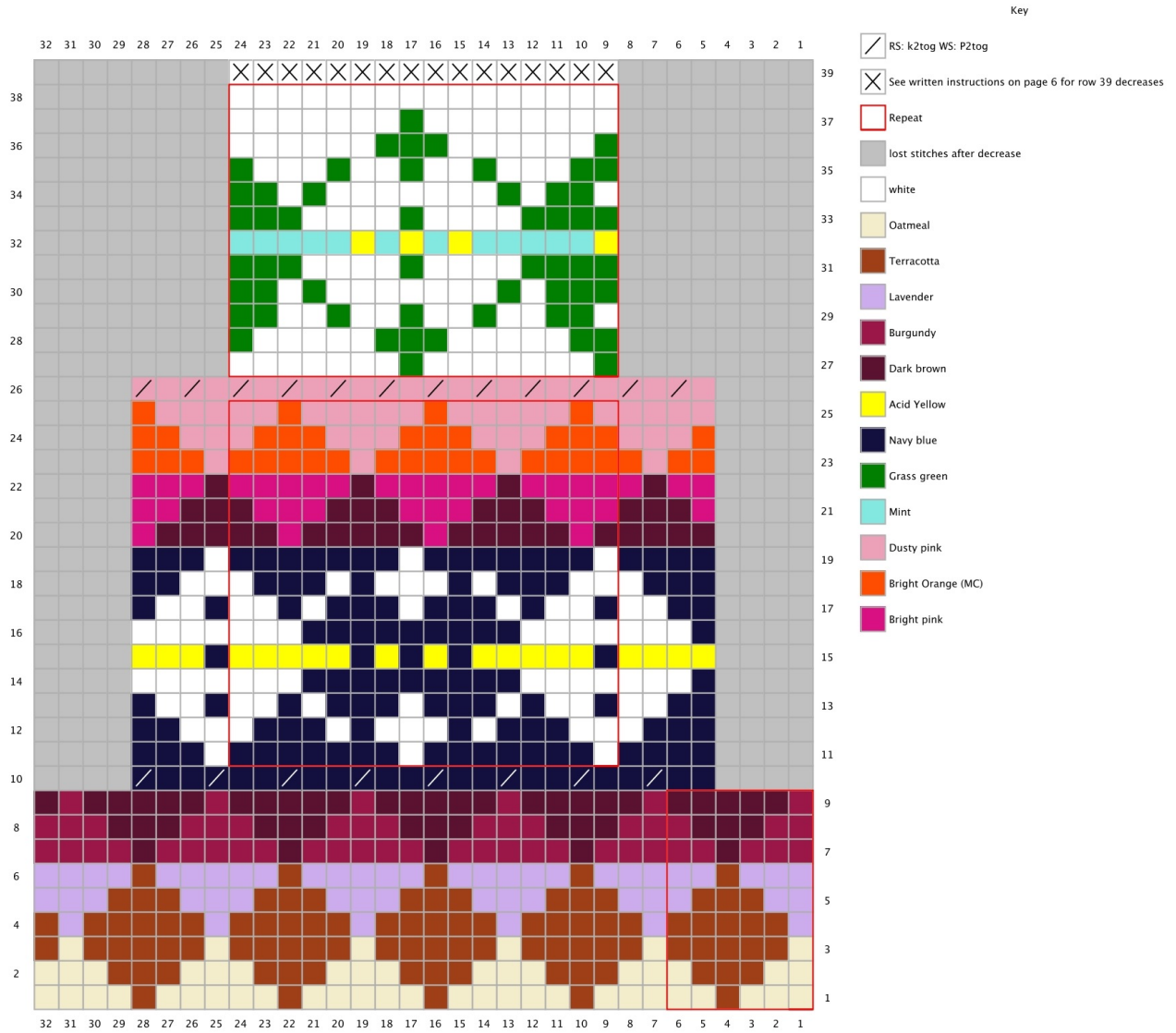


Chart 2d: the yoke (size 6 years)

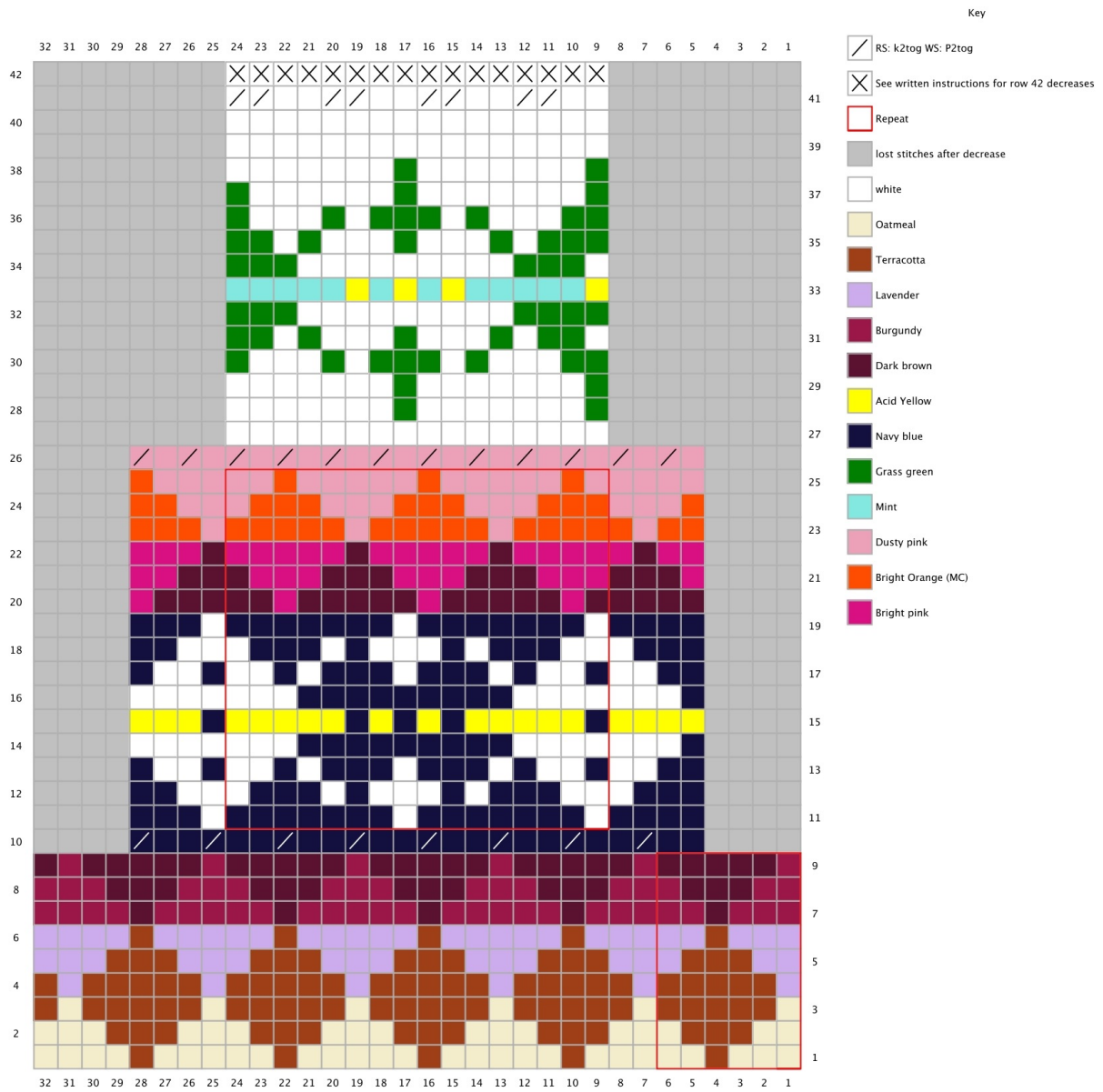


Chart 2e: the yoke (size 8 years)

